

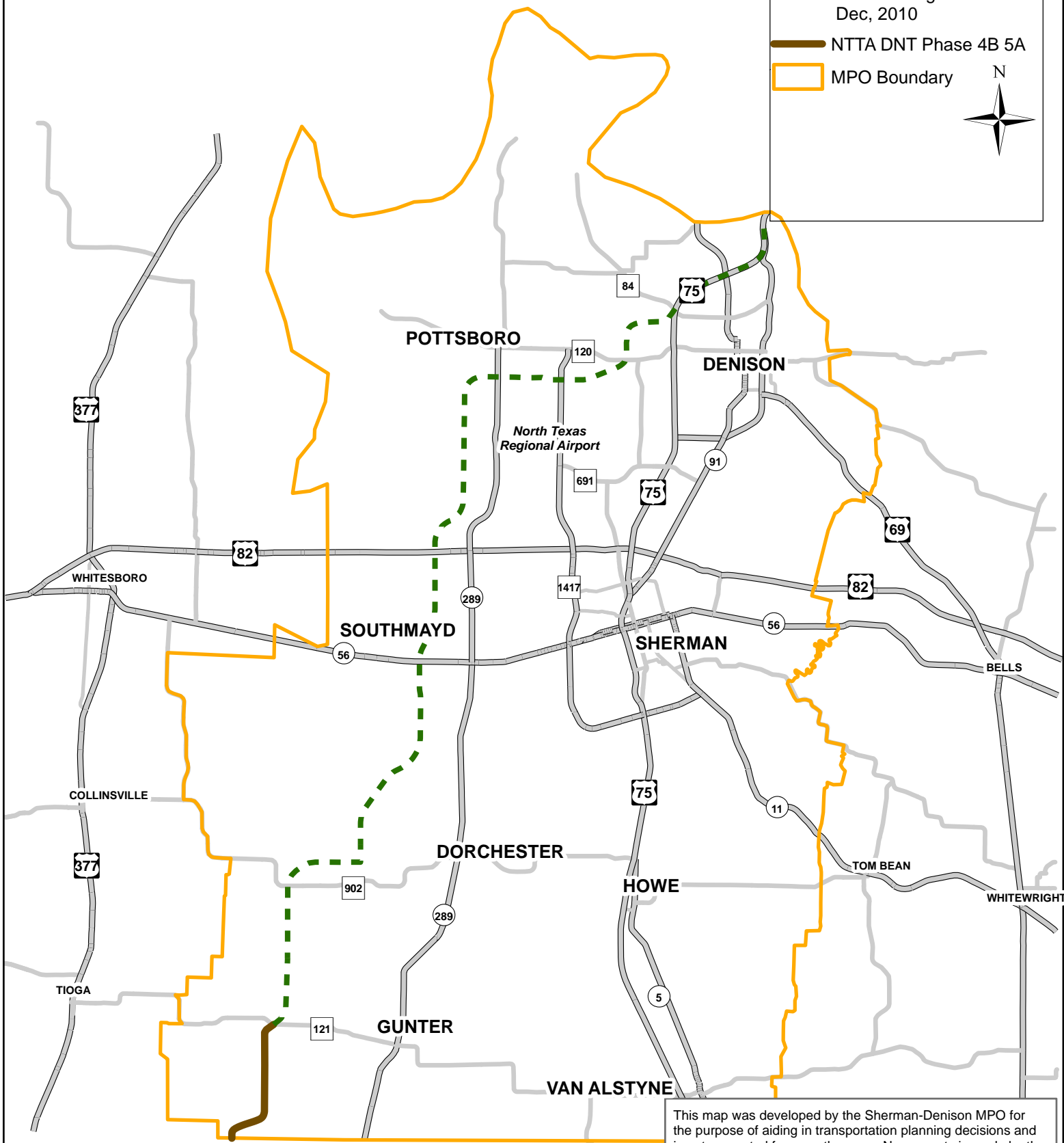
Sherman - Denison MPO Grayson County, Texas

Legend

SD MPO Resolution
Ultimate Alignment
Dec, 2010

NTTA DNT Phase 4B 5A

MPO Boundary



This map was developed by the Sherman-Denison MPO for the purpose of aiding in transportation planning decisions and is not warranted for any other use. No warranty is made by the Sherman-Denison MPO regarding its accuracy or completeness. Alignments are estimates only; actual alignments may be determined at a later date.